

BREAKING BOUNDARIES: BUILDING A DYNAMIC PBRN FOR TRANSFORMATIVE HEALTHCARE COLLABORATION IN PUERTO RICO

Carlamarie Noboa, PhD, MS¹, Loren A. Meléndez, MS¹, **Laura Domenech, MD²**, Barbara Carlo, BA¹, Enid J. García-Rivera, MD, MPH¹
(1) University of Puerto Rico, Medical Sciences Campus, San Juan, PR (2) Ponce Health Sciences University, Ponce, PR

BACKGROUND

Pioneered in the US during the 1980s, Practice-based Research Networks (PBRNs) have fostered the collaboration between academic researchers and clinicians, driving knowledge translation into communities.

In Puerto Rico, the Hispanic Alliance for Clinical and Translational Research launched the island's inaugural PBRN to forge a collaborative nexus among healthcare providers, researchers, and community stakeholders.

Generating Research Opportunities Working together for Puerto Rico (GROW PR Network) was formed, establishing a connection with over 90 members, 15 signed MOUs, site visits, and meetings for members and collaborators by 2024.

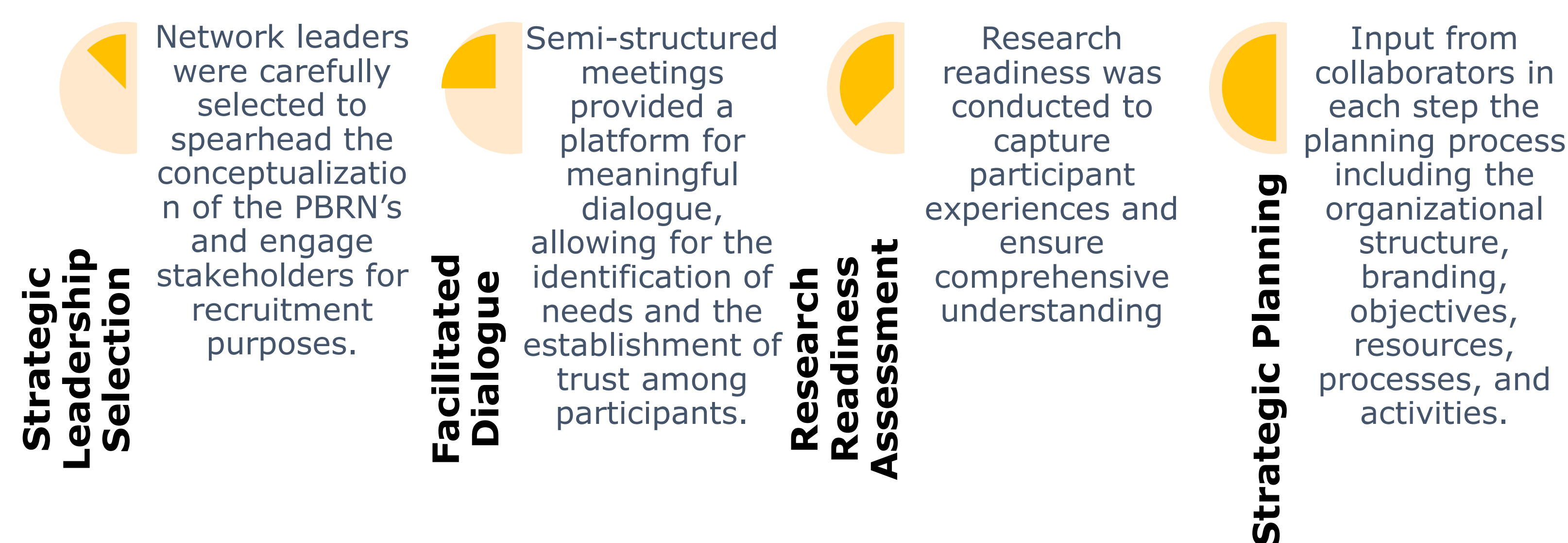
This represents a unique opportunity to continue the advancement of clinical research and translating findings expeditiously and effectively

METHODS

Network Development

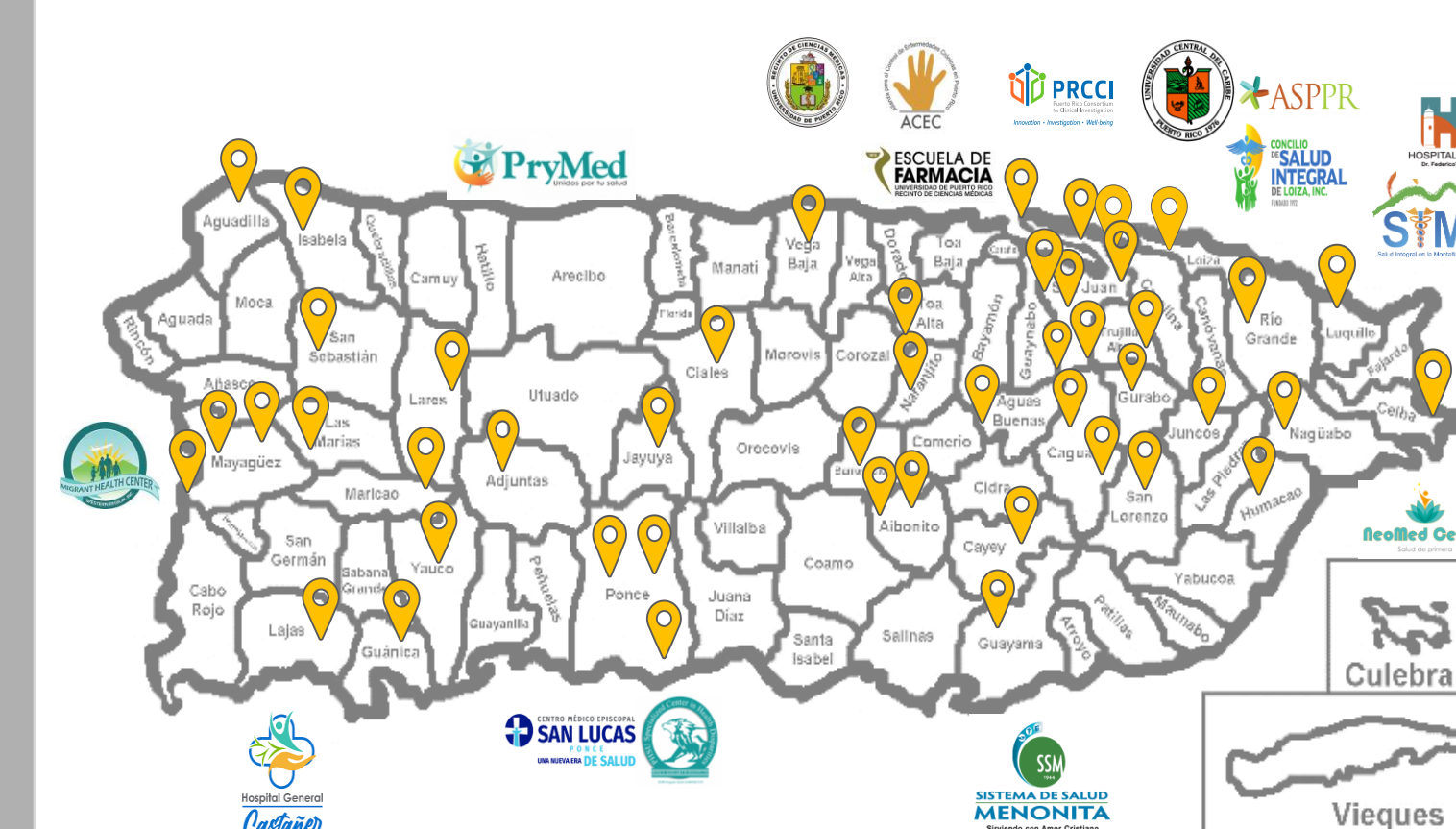


Implementation Process



RESULTS

GROW PR Network Members



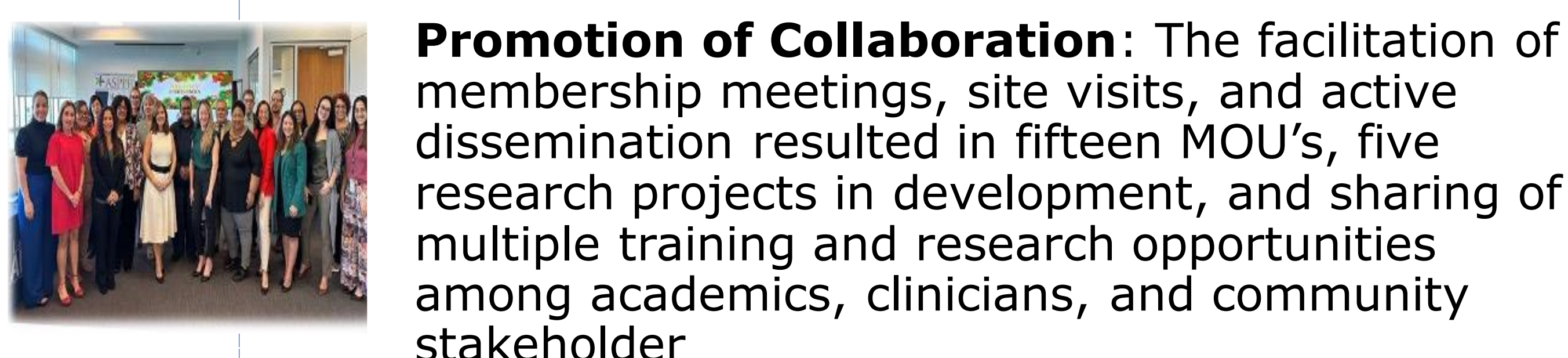
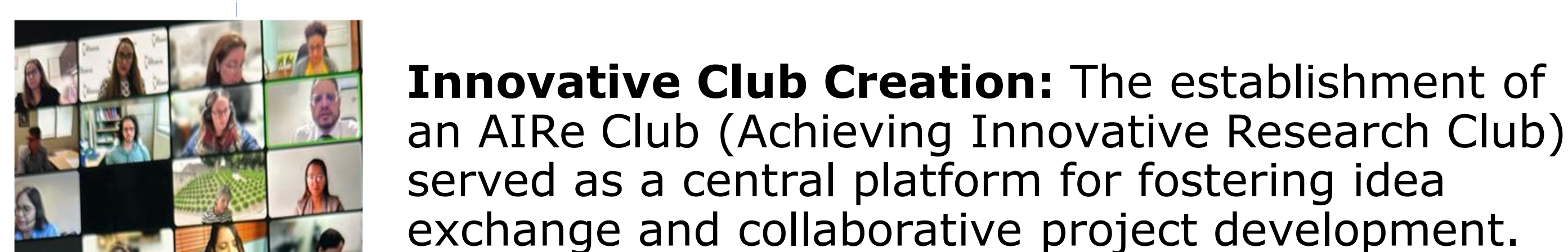
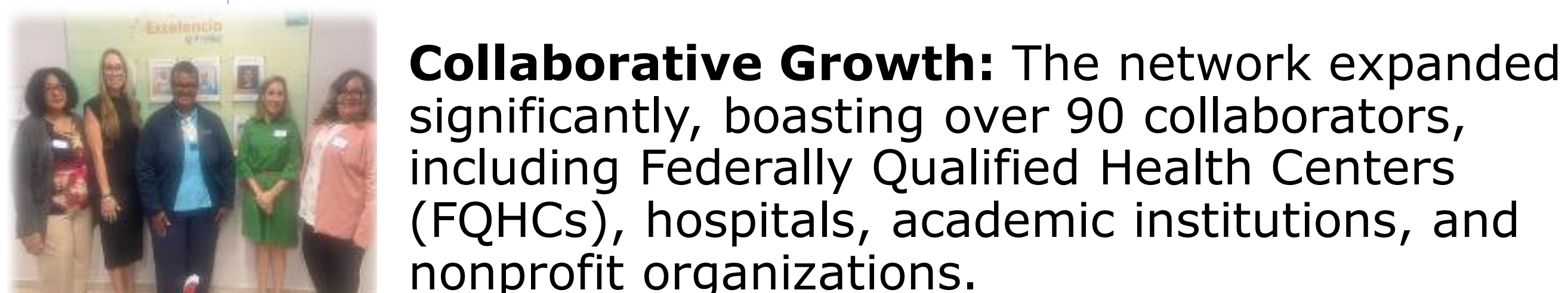
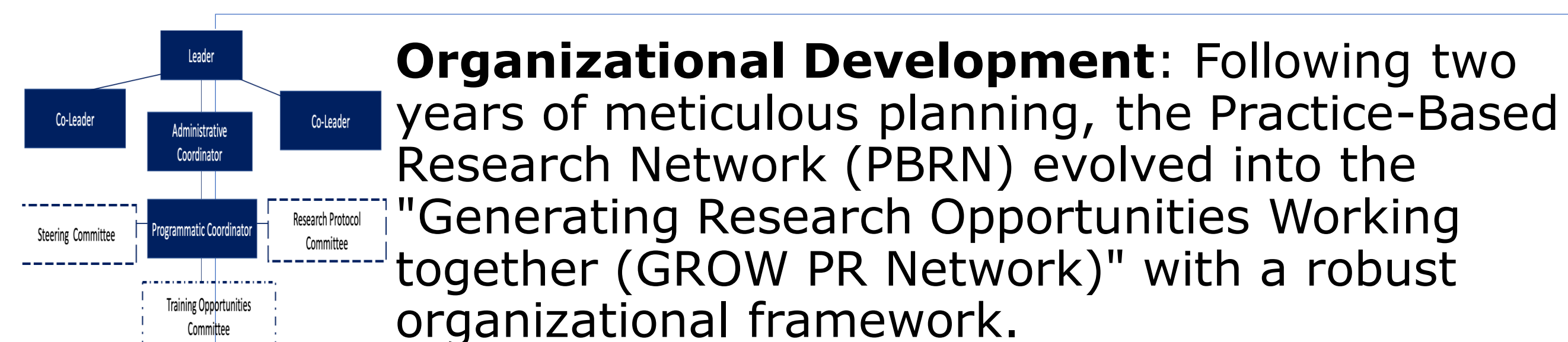
OBJECTIVES

The objective is to share the process of conceptualization and development of the first Practice Based Research Network in Puerto Rico (GROW PR Network, born from strategic planning and propelled by a commitment to promote collaborative endeavors to support clinical and translational research in Puerto Rico.

From its inception, this network has served as a platform to foster interdisciplinary partnerships heightening the role of primary care research to obtain change in healthcare.

Through a phased approach that include a participatory approach we have transformed into a vibrant community of over 90 collaborators, spanning FQHCs, hospitals, academia, nonprofits, and governmental organizations.

RESULTS



CONCLUSION

GROW PR Network heralds a singular opportunity to collectively address community-based healthcare queries and translate research discoveries into practice.

Active stakeholder engagement across all phases is imperative for fostering a resilient collaborative network, driving scientific implementation, and nurturing enduring relationships to uplift community health services and outcomes.

As the network evolves, it remains dedicated to advancing research opportunities and improving healthcare outcomes through collaborative endeavors through innovation, effective communication strategies, and empowerment through diversity.

ACKNOWLEDGMENTS

The Hispanic Alliance for Clinical and Translational Research (Alliance) is supported by the National Institute of General Medical Sciences (NIGMS) National Institutes of Health under the Award Number U54GM133807.

